

Packet Tracer – Deploying Devices

Objectives

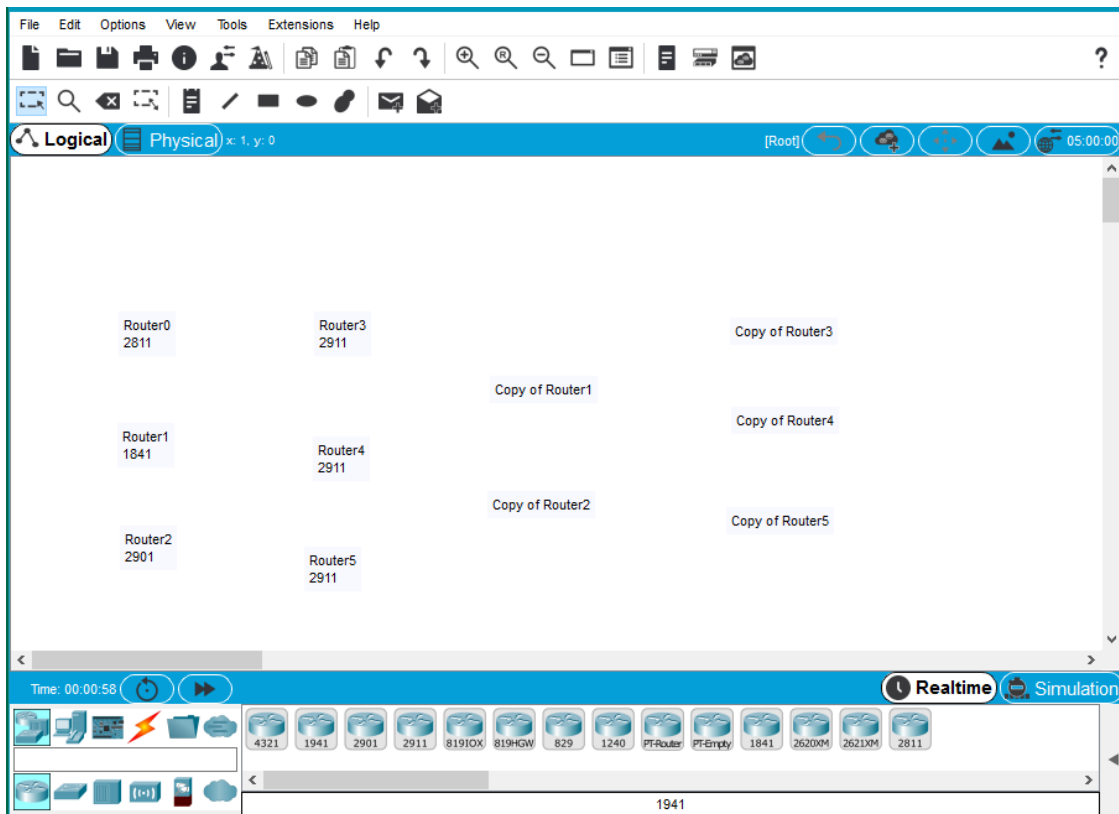
Deploy Network Devices

Background / Scenario

In this activity, you will open a sample file, locate and deploy multiple devices, and then save the file.

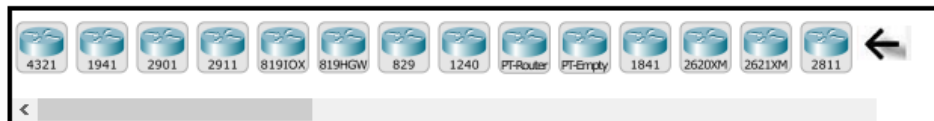
Step 1: Open the Deploying Devices Packet Tracer file.

Double click on the **Deploying Devices.pkt** file to open it. You should be presented with a screen similar to that shown below. If the file does not open, make sure you have properly installed the Packet Tracer application program.



Step 2: Learn how to Deploy Devices in Packet Tracer.


1. A list of device labels is visible in the workspace, we will use various methods to deploy the listed devices.
 - a. First locate the 2811 router in the **Device-Specific Selection** box pictured below.



- b. Using your mouse, click on the 2811 router, and while holding the mouse button down, drag the router over the Router 0 label, then release.
- c. Now click on the 1841 router in the **Device-Specific Selection** box and then click on the label Router1 in the workspace.
- d. Use either of the methods in points A or B to put a 2901 router on the workspace over the Router2 label.

Tip #1

If you want to put multiple devices of the same type onto the workspace, the clicking and dragging can become very tedious. To avoid this hold down the <CTRL> key as you click on the device in the **Device-Specific Selection** box.

- e. Hold down the <CTRL> key and click on the 2911 router in the **Device-Specific Selection** box. Now click on the labels Router3, Router4, and Router5. To cancel the operation, click on the **Cancel** symbol  where the 2911 router was in the **Device-Specific Selection** box.

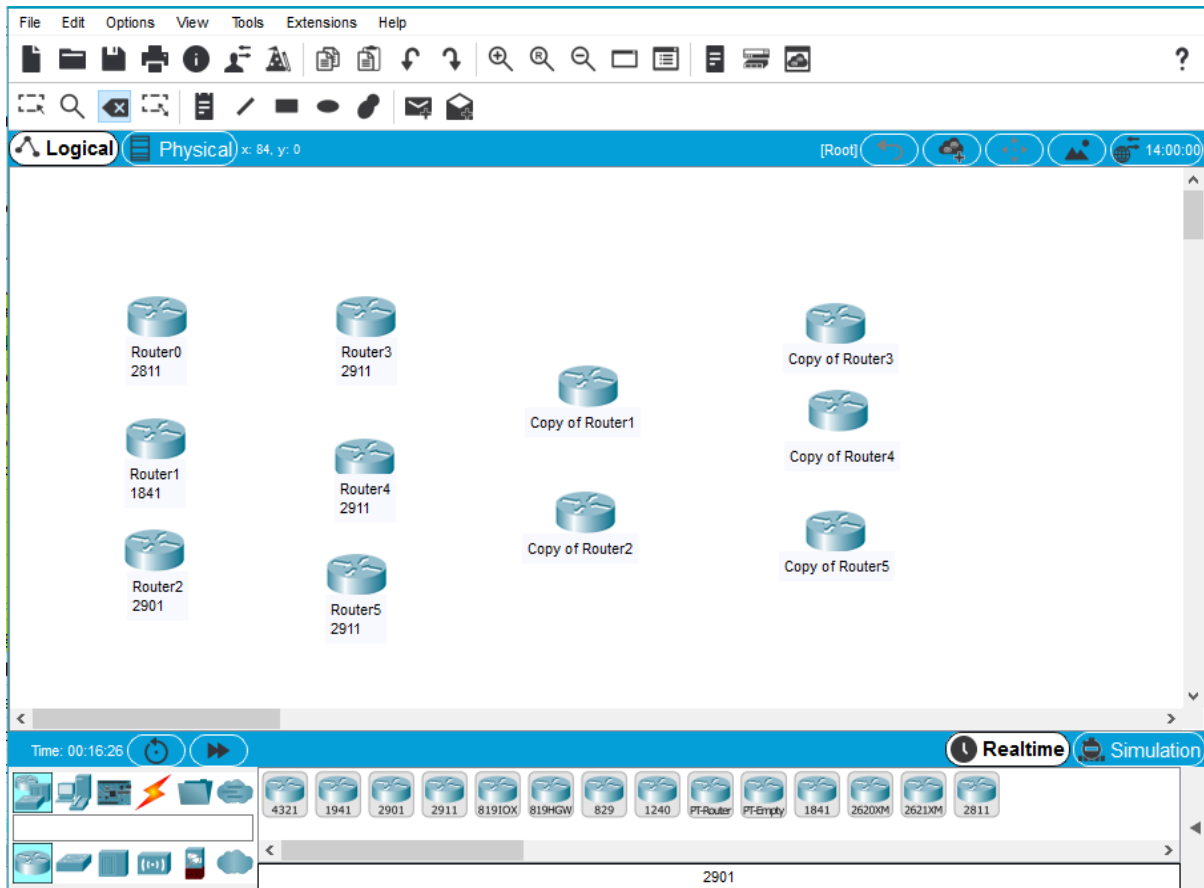
Tip #2

The user may also copy devices on the workspace in two ways.

- f. Method 1: Drag your cursor over the devices that you want to copy. Drag a box over Router3, 4 and 5. They should appear faded. Hold down the <CTRL> key and drag Router3 over the label Copy of Router3.
- g. Method 2: Hold down the <SHIFT> key and click on the devices to be copied. Select Router1 and Router2. Click on Router1 and Router2 while holding down the <SHIFT>key. They will again have a faded look. Point at Router1, hold down the <CTRL> key and drag the devices over the label Copy of Router1 and release.

Your screen should look like the image below if you have deployed the devices correctly. If the file does not look correct, reload the file, and start over.

Packet Tracer – Deploying and Cabling Devices



If the file looks correct, Save your activity file.

Exit Packet Tracer